

Cheddi Jagan International
Airport Corporation

2017 Review

FINANCE

STATEMENT OF ASSETS & LIABILITIES

	2017	2016
	\$	\$
ASSETS		
Non Current Assets		
Property, Plant & Equipment	3,873,462,889	3,604,865,005
Intangible Assets	6,678,996	13,451,642
Work In Progress	499,785,998	286,590,308
Total Non Current Assets	4,379,927,883	3,904,906,955
Current Assets		
Investment	354,652,144	294,004,588
Inventories	34,177,035	38,771,035
Receivables	138,783,360	121,396,507
Cash and Cash Equivalent	643,866,513	129,563,449
	1,171,479,051	583,735,579
TOTAL ASSETS	5,551,406,934	4,488,642,534
EQUITY & LIABILITIES		
Equity		
Share Capital: Authorised & Paid-up	200,000,000	200,000,000
Revaluation Reserve	4,363,275,990	3,847,953,576
Accumulated Net Loss	(1,010,267,804)	(1,217,698,664)
Total Equity	3,553,008,186	2,830,254,912
Non Current Liabilities		
Gov't/IDB Grants	1,502,838,446	1,447,929,746
Deferred Tax Liability	21,697,722	-
Total Non Current Liabilities	1,524,536,168	1,447,929,746
Current Liability		
Govt Grant	81,586,250	83,078,324
Tax Liability	83,035,422	-
Trade & other Payables	309,240,907	127,379,551
Total Current Liabilities	473,862,580	210,457,875
TOTAL EQUITY & LIABILITIES	5,551,406,934	4,488,642,533

FINANCE

STATEMENT OF REVENUE & EXPENDITURE

		2017		2016
		\$		\$
OPERATING INCOME				
Revenue				
Airport Security Fee		705,716,323		400,188,000
Income retained by CJIA		907,894,541		789,978,650
Income remitted to MPI		-		68,033,104
Interest Earned		1,598,523		1,072,808
Capital Grant Recognised		109,917,864		168,631,459
		1,725,127,251		1,427,904,021
OPERATING EXPENSES				
Administrative		592,264,551		480,664,684
Operational		388,999,435		454,019,086
Expenses specific to the agency		-		66,627,300
Depreciation & Ammortisation		410,196,368		425,935,108
Loss on Disposal of Inventories		4,252,510		20,948,959
AEP Expenses		27,333,489		16,558,070
Operating Profit/ (Loss)		302,080,898		(36,849,186)
NON -OPERATING INCOME/(EXPENSES)				
Proceeds from Disposal/Sale of Assets		-		-
Transferred to MPI		-		(68,033,104)
Loss on Disposal of Non Current Assets		(17,883,471)		(2,438,201)
		284,197,427		(107,320,491)
Rates & Taxes		117,235,412		-
Net Profit/(Loss) for the Year		166,962,015		(107,320,491)
Accumulated Loss Brought Forward		(1,217,698,665)		(1,110,378,173)
Adjustment to Prior Year		40,468,846		0
Accumulated Loss Carried Forward		(1,010,267,804)		(1,217,698,665)

The accompanying notes form an integral part of these financial statement

FINANCE

CASH FLOW FOR THE YEAR 2017

Details	Year to Date					Remarks
	YTD Dec'17 BUD	YTD Dec'17 ACT	BUD vs ACT	YTD Dec'16 ACT	2017 vs 2016	
	\$	\$	\$	\$	\$	
Aeronautical						
Landing charges	251,320,604	242,926,403	(8,394,200)	231,773,755	11,152,648	The variance from budgeted is due to the loss of five(5) air carriers in latter part of 2017
Passenger-related charges						
CUTE Charge	336,873,527	300,837,647	(36,035,879)	291,539,462	9,298,185	The variance from budgeted is due to the loss of five(5) air carriers in latter part of 2017
Passenger screening charge	58,007,793	54,137,399	(3,870,394)	53,468,231	669,168	
Airport Security tax	676,371,880	663,614,943	(12,756,937)	400,773,000	262,841,943	Increase over prior year is due to additional \$1,000 per ticket. The variance from budget is due to the cash flow delay since this fee is now included in the cost of the ticket. Previously this was collected on spot from GRA and remitted to us
Other operating aeronautical revenue						
Ground handling (non-concession)	131,198	330,000	198,803	110,250	219,750	
Sub total	1,322,705,001	1,261,846,393	(60,858,608)	977,664,698	284,181,695	
Non-aeronautical						
Revenue from concessions,Rental	142,448,151	96,222,210	(46,225,941)	130,835,635	(34,613,425)	Food and beverage concessions shown separately . Roraima and DDL has outstanding amount of 12m in total.
Food and beverage	24,981,008	43,073,389	18,092,381	23,346,736	19,726,653	
Advertising	29,238,948	21,487,671	(7,751,277)	26,846,679	(5,359,008)	Decrease due to removal/relocation of signs
Fuel and oil	11,384,017	13,081,564	1,697,547	10,654,605	2,426,959	Increase in throughput from fuel farms
Revenue from airport operated activities						
Car parking -airport owned	54,510,281	56,433,800	1,923,519	47,602,500	8,831,300	Increase is due to fee increase which was effective July 2016
Property and real estate income or rent	15,819,736	10,110,143	(5,709,593)	14,523,159	(4,413,016)	There are still outsting payments from various operators
Red cap fees	3,287,020	2,718,328	(568,692)	3,025,000	(306,672)	
Taxi fees	3,347,630	2,734,069	(613,561)	3,081,000	(346,931)	
Other revenue from activities undertaken by airport	13,397,759	21,877,225	8,479,466	12,365,947	9,511,278	There was an increase in issuance of ID Cards & Escorts and usage of Conference Room, protocol services. Also introduction of Vehicle Wheel clamping fee for illegal parking on Airport grounds and the vehicle permit charge.
Release from M.P.I	-	59,225,588	59,225,588	41,240,384	17,985,204	
Sub total	298,414,549	326,963,987	28,549,438	313,521,645	13,442,342	
Total Income collected	1,621,119,549	1,588,810,380	(32,309,170)	1,291,186,343	297,624,037	

FINANCE

CASH FLOW FOR THE YEAR 2017

Details	Year to Date					Remarks
	Jan -Dec 2017 Budgeted	Jan -Dec 2017 Actual	Variance from budgeted	Jan -Dec 2016 Actual	Variance from Actual	
	\$	\$		\$	\$	
Expenditure						
Employment Cost	564,134,264	502,213,994	61,920,270	421,708,727	80,505,267	Staffing as at December 2017 amounted to 269 compared to 215 for the corresponding period last year, this reflects an 25% increase. .We budgeted for recruitment of 5 quality control officers, only 2 were hired. Staff awards & pension awards were also not done which was budgeted at \$5M. Training was not utilized as budgeted. Half of the bonus was paid in 2017.
Operating Costs	690,930,368	467,827,590	223,102,778	481,670,382	(13,842,792)	The main reason for the variance from budget is due to the fact that we are undertaking less maintenance projects. Projects such as repainting of offices , repainting of runway, Apron repairs were not completed.
Capital Expenditure	89,600,000	128,203,862	(38,603,862)	-	128,203,862	
Contingency - sum set aside for Airport Expansion	200,000,000	-	200,000,000	-	-	payment of \$211M was made in Jan 2018
Contingency - CJIAC Corporation	50,000,000	-	50,000,000	-	-	
Corporation Tax	12,502,269	12,707,765	(205,496)	-	12,707,765	
Strategic /business plans	-	-	-	-	-	
Total Expenditure	1,607,166,901	1,110,953,211	496,213,690	903,379,109	207,574,102	
Surplus/(Deficit)	13,952,649	477,857,169	463,904,520	387,807,234	90,049,935	
If Electricity was paid in 2016				38,879,850		
Adjusted Surplus for 2016				348,927,384		

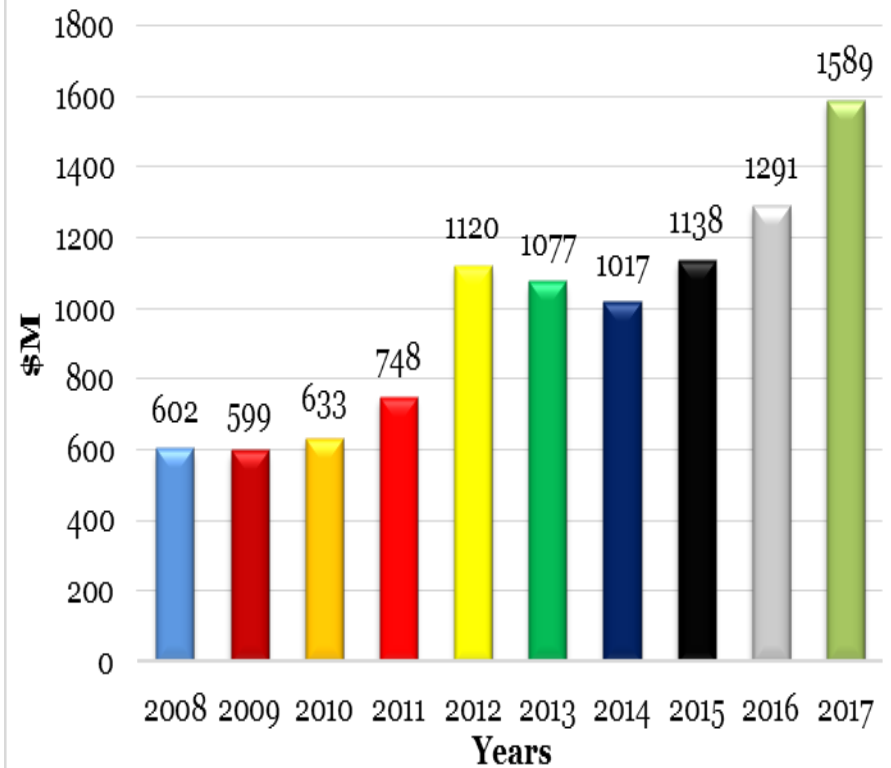
FINANCE

REVENUE COLLECTION

Revenue collection as at Dec over the last ten (10) years

Year	Revenue Collection \$M	%
2008	602	0
2009	599	(0)
2010	633	6
2011	748	18
2012	1120	50
2013	1077	(4)
2014	1017	(6)
2015	1138	12
2016	1291	13
2017	1589	23

Revenue Collection Over A Ten Year Period



STATISTICS

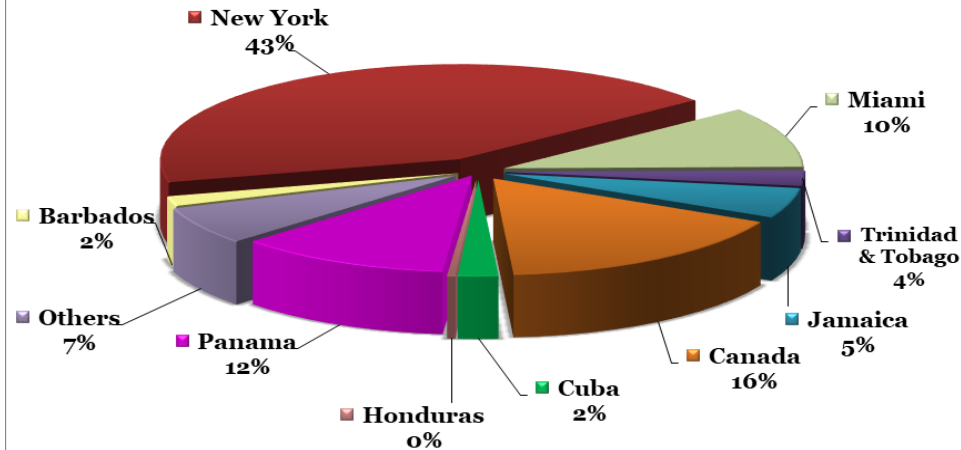
PASSENGERS

- Total Passengers Flown was **592,053** compared to **572,444** in 2016. This represents a **3%** increase from the corresponding period last year.
- International Passenger Arrivals for 2017 was **299,732** or 4% higher than 2016.

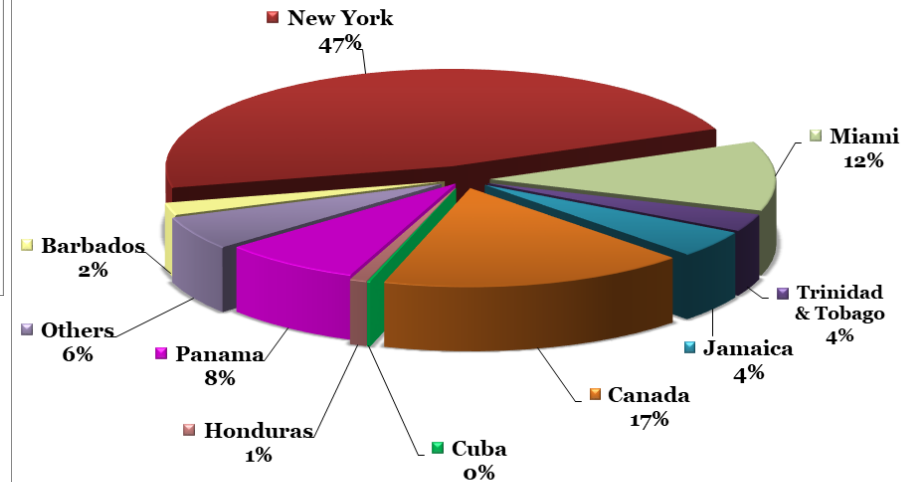
STATISTICS

VISITORS ARRIVALS & DEPARTURES BY KEY MARKETS

Visitor Arrivals & Departures by Key Areas 2017



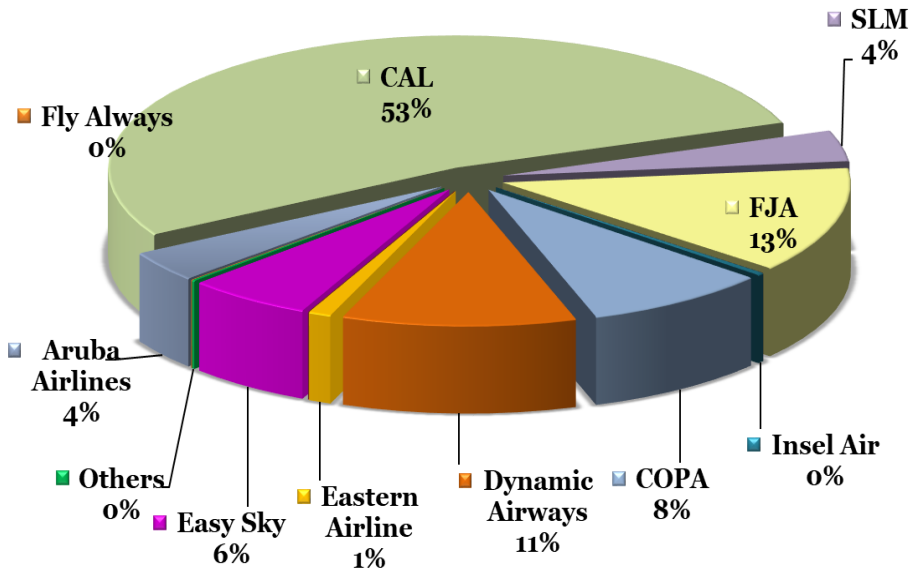
Visitor Arrivals & Departures by Key Areas 2016



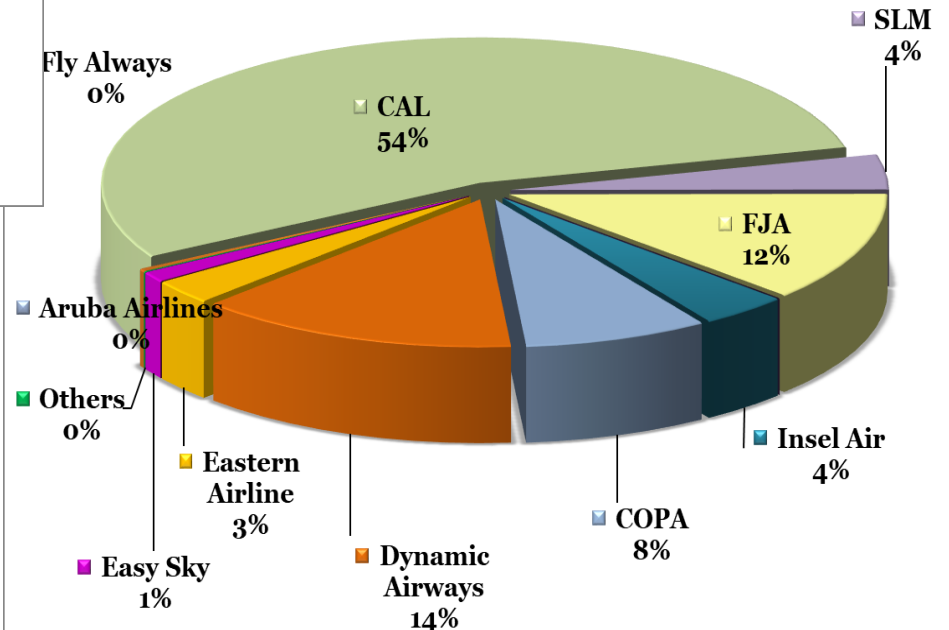
STATISTICS

AIRLINE MARKET SHARE

**Airlines Market Share of Total Passengers
Travelled for Jan - November 2017**



**Airlines Market Share of Total Passengers
Travelled for Jan - November 2016**



STATISTICS

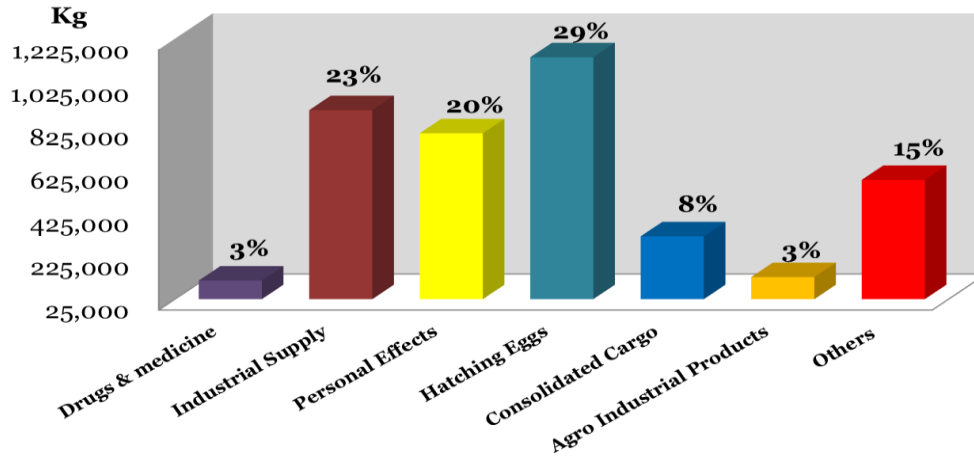
CARGO

- Imported cargo for the period under review amounted to **4,618,973 Kgs** compared to **4,053,300 Kgs** in 2016, an **14%** increase from the corresponding period last year.
- Exports amounted to **3,269,207 Kgs** or a **3%** increase from that of the corresponding period in 2016
- Total Cargo Processed amounted to **7,888,180 Kgs** compared to **7,221,849 Kgs** in 2016

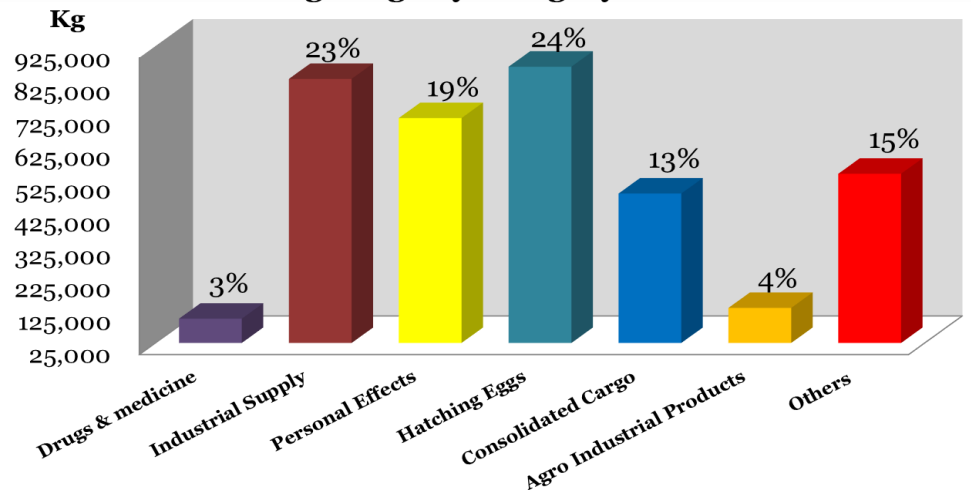
STATISTICS

INCOMING CARGO BY CATEGORY

Incoming Cargo by Category as at November 2017



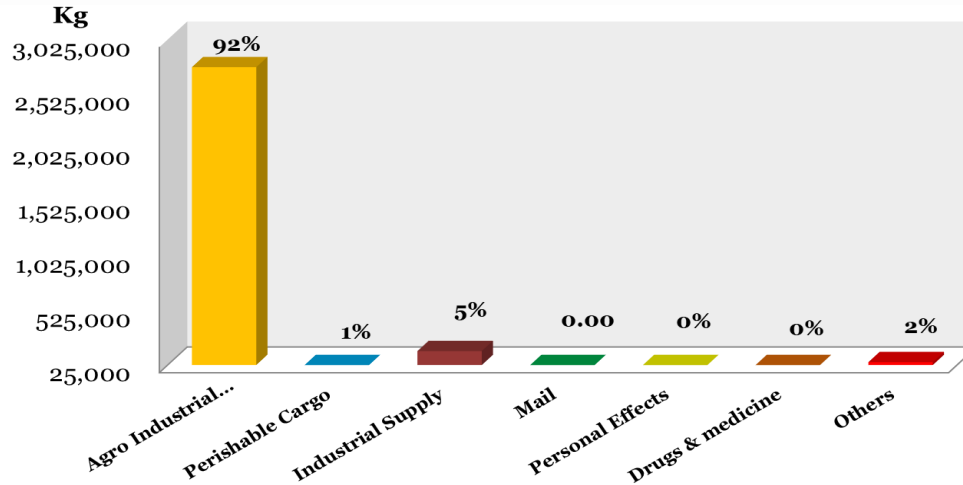
Incoming Cargo by Category as at November 2016



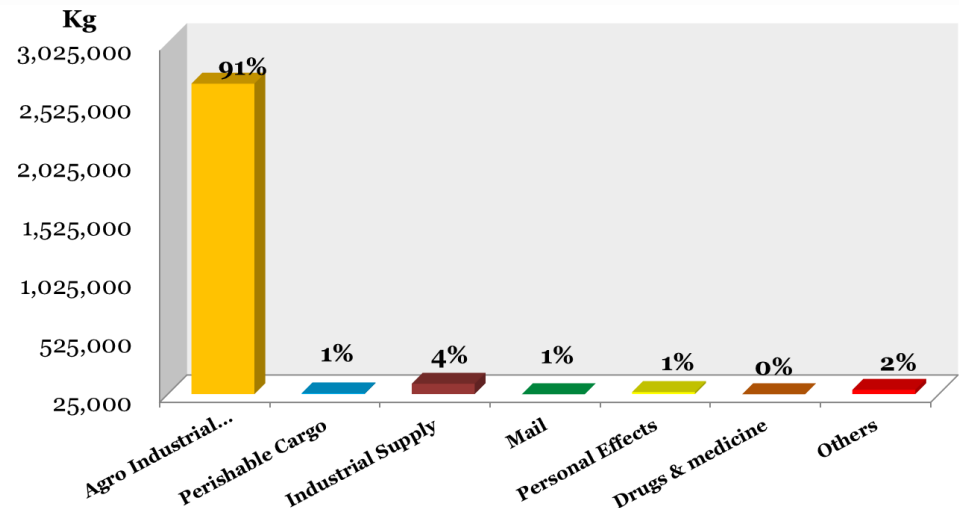
STATISTICS

OUTGOING CARGO BY CATEGORY

Outgoing Cargo by Category as at November 2017



Outgoing Cargo by Category as at November 2016



STATISTICS

AIRCRAFT MOVEMENT

- **International Aircraft Landing was 3,641 a increase of 1% when compared to 2016.**
- **Jet Aircraft Landings decreased from 3,472 to 3,440, due mainly to the loss of Dynamic, Insel Air, Eastern Airlines and Easy Sky in the latter half of 2017**
- **Turbo Prop and Smaller type aircraft landing reduced from 456 to 439 due mainly to the decrease in flights by Roraima and Air Services Ltd. .**
- **Itinerant Landings was 220 compared to 174 in 2016.**

AIRLINES

COPA AIRLINES

COPA flies from GEO to Panama on Tuesdays, Wednesdays, Fridays & Saturday using Boeing 738 and Embraer 90.

Period: Jan – Dec 2017

Flights: 209

Market Share: 9%

Passengers Flown : 50,802



AIRLINES

CARIBBEAN AIRLINES

CAL operates flights to New York, Miami, Trinidad and Toronto using the Boeing 738 aircraft.

Caribbean Airlines continues to be the largest player in the market.

Period : Jan – Dec 2017

Flights: 1,575

Market Share : 53%

Passengers Flown: 314,535



AIRLINES

DYNAMIC AIRWAYS

Dynamic Airways flew the GEO-JFK-GEO using a Boeing 763 aircraft.

The airline filed for bankruptcy and ceased operation on October 3, 2017. At the time of departure the statistics were as follows:

Period: Jan – Oct 3, 2017

Flights: 166

Market Share: 10%

Passengers Flown : 58,337



AIRLINES

FLY JAMAICA

Jamaica flies to JFK, KIN and YYZ using Boeing 763 and 752 aircrafts

Period: Jan – Dec 2017

Flights: 331

Market Share: 13%

Passengers Flown: 77,111



AIRLINES

EASTERN AIRLINES

Eastern Airlines flew to JFK with a B738 aircraft.

The Airline ceased operations on 26 April 2017. At the time of departure, the statistics were as follows:

Flights: **37**

Market Share: **1%**

Passengers Flown : **5,696**



AIRLINES

INSEL AIR

Insel Air operated between June 2014 and March 3, 2017

Period: Jan – March 3, 2017

Flights : 32

Market Share: 0%

Passengers Flown In 2017: 1,793



AIRLINES

SURINAM AIRWAYS

Surinam Airways continues to provide service on the Paramaribo/Georgetown/Miami route on Tuesday, Thursday and Saturday using Boeing 733 & 738.

Period: Jan – Dec 2017

Flights: 390

Market Share : 4%

Passengers Flown: 22,711



AIRLINES

FLY ALWAYS

Fly Always commenced operations in August 2016 and ceased on July 12, 2017. They operated on Thursdays & Saturdays using a F70 aircraft.

Period : Jan– July 2017

Flights : 11

Market Share: 0%

Passengers Flown : 308



AIRLINES

EASY SKY

Easy Sky plied the GEO-MUHA route using the Boeing 735 & 732 aircraft. The Airline ceased operations on September 14, 2017

At the time of their departure, the statistics were as follows:

Period: Jan – Sept. 2017

Flights: 230

Market Share : 5%

Passengers Flown : 31,281



AIRLINES

ARUBA AIRLINES

Aruba Airlines plies the GEO-TNCA, GEO-MUHA routes with daily flights using Airbus A320.

Period: Aug – Dec 2017

Flights: 112

Market Share: 5%

Passengers Flown: 28,573



COMMERCIAL

CAR RENTAL SERVICE

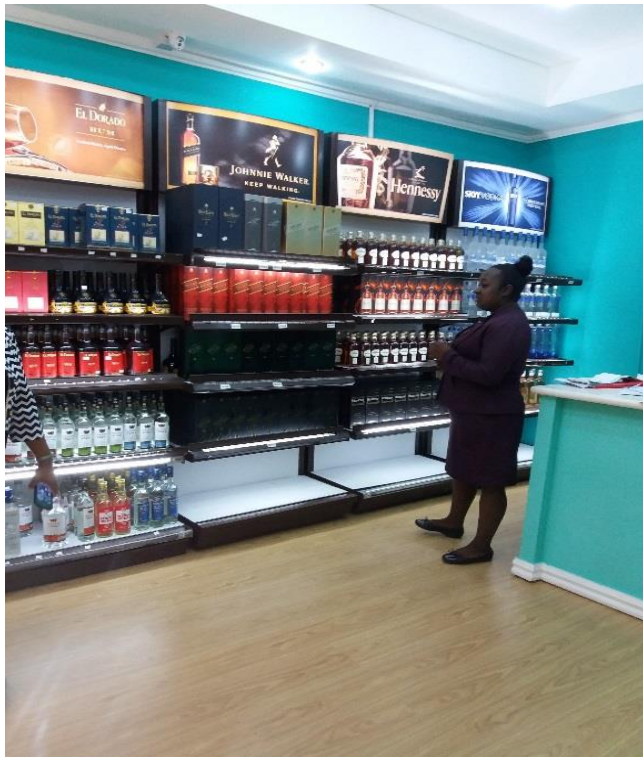
Passengers arriving at the Airport can now benefit from Car Rental Services being provided by Massy and Sixt Car Rental. Massy commenced operations on 19th December 2017 while Sixt Car Rental will offer their service in January 2018.



COMMERCIAL

DUTY FREE CONCESSION

T. Wee Duty Free, operated by Ansa McAl Trading Ltd., opened their doors on 24th February. Passengers now have access to a larger variety of Duty Free alcohol and perfumes



OPERATIONS

PASSENGER FACILITATION

- Effective February 1, 2017 the Airport Security Fee was included in the cost of the ticket and the operations of the GRA tax booth ceased. This development made the passenger journey at departure one step shorter



OPERATIONS

EMERGENCY EXERCISE

The Cheddi Jagan International Airport Corporation (CJIAC) staged a Full Scale Emergency Exercise on the 08th November, 2017 during the evening on the Aerodrome.

The Exercise, which commenced at 18:44 hours and concluded at 20:21 hours, involving approximately Three Hundred (300) persons from key agencies such as the Cheddi Jagan International Airport Corporation, Guyana Defence Force, Guyana Police Force, Airport Fire Service, Airport Security Unit, Public Health, Civil Defence Commission, Airline Representatives and the Guyana Civil Aviation Authority.

OPERATIONS

EMERGENCY EXERCISE Cont.



OPERATIONS

EMERGENCY EXERCISE Cont.



OPERATIONS

EMERGENCY EXERCISE Cont.



OPERATIONS

AERODROME CERTIFICATION

The GCAA conducted an inspection of the CJIAC operations and was pleased with the operations, hence, the Aerodrome was certified. It was noted CJIAC was found to be in compliance with all the required regulations.



OPERATIONS

RUBIS New Facility Was Constructed at a cost of 2.5 Million UD Dollars



TRAINING

INSTRUCTOR TRAINING

Ten Personnel (10) from the Aviation Security Division successfully completed an Instructor's Training program. The program which is sanctioned by the Guyana Civil Aviation Authority, prepares new instructors to deliver initial and recurrent training in the areas of Security Awareness, Security Screening Certification and other supplementary courses.



TRAINING

OTHER SECURITY TRAINING

Also during 2017 **six hundred and fifty-six (656)** persons received training from the Cheddi Jagan International Airport training department. Below is a list of the various training programs:

- Explosive Trace Detector Training Program- **65** Participants
- Security Awareness- **413** Participants
- Screener Certification Training - **49** Participants
- Screeners Re-Certification Training- **75** Participants
- Security Induction- **31** Participants
- Remedial Training- **23** Participants



SECURITY

RECOVERY OF MISSING ITEMS

- A total of **thirty-three (33)** missing items belonging passengers were recovered and handed over to their owner, with the assistance of Closed Circuit Television System.
- These items include **luggage, cell phones, passports and other personal property** that were inadvertently left at the screening checkpoint or picked up by other passengers in the Departures and Arrivals Terminal.

PASSENGER COLLECTING HIS IPAD



SECURITY

ETD MACHINES

In March 2017, the Aviation Security Division introduced Explosive Trace Detector machines for screening of departing passengers. The machines are used to screen selectee (SSSS) and randomly selected passengers for traces of explosives and narcotic substances on their person, clothing and cabin baggage.



SECURITY

PROCUREMENT OF WALK THROUGH METAL DETECTOR



The L-3/Garrett PD 6500i Walk Through Metal Detector was Purchased to provide additional screening at the Airport.

SECURITY

Installation of CCTV Cameras

**Cameras
being
installed
at Arrival
Area**



**Camera at
Custom Exit**



This work was conducted by a contracted firm being supervise by the IT department during the month of February 2017.

SECURITY

GATE 1 LOCATION TO MAIN TERMINAL BUILDING



Installation of CCTV Cameras for the Gate 1 location of airport – This was needed to provide additional surveillance for CJIA Monitoring Room. **The project was** completed during the month of April 2017.

SECURITY

PUBLIC CAR PARK



This project for CCTV surveillance has commenced during the month in review and expected to be completed in November 2017.

OTHER ACTIVITIES

SCHOOL TOURS

Over **3,000 students** from **29 schools** visited the airport during 2017



OTHER ACTIVITIES

SCHOOL TOURS



OTHER ACTIVITIES

Celebrating Emancipation At The Airport

On August 1, 2017, the management of CJIAC treated arriving passengers to African treats in observance of Emancipation Day - a national holiday in Guyana.

Fly Jamaica, Suriname Airways and Dynamic Airways passengers were given samples of mauby drink, cassava pone and coconut buns.



OTHER ACTIVITIES

DIWALI OBSERVANCE

On October 18, arriving passengers were greeted to the pulsating sound of tassa drums and sweet meats as the airport celebrated Diwali – the festival of lights.

The annual event as usual was a **treat** to the passengers.



OTHER ACTIVITIES

CJIAC ANNUAL BLOOD DRIVE

Employees of the Airport donated twenty three (23) units of blood to the Blood Bank during its 2017 exercise. Forty seven (47) units of blood was donated in 2016.



2018 PROJECTS

- Completion of Airport Expansion Project
- New CJIAC Website
- Procurement of Checked Baggage, Cabin Baggage and Cargo Scanner
- Lighted Aerodrome Signs
- Repairs to several Taxiways
- Install Additional Perimeter Lighting
- Automated Car Parking System

THANK YOU!